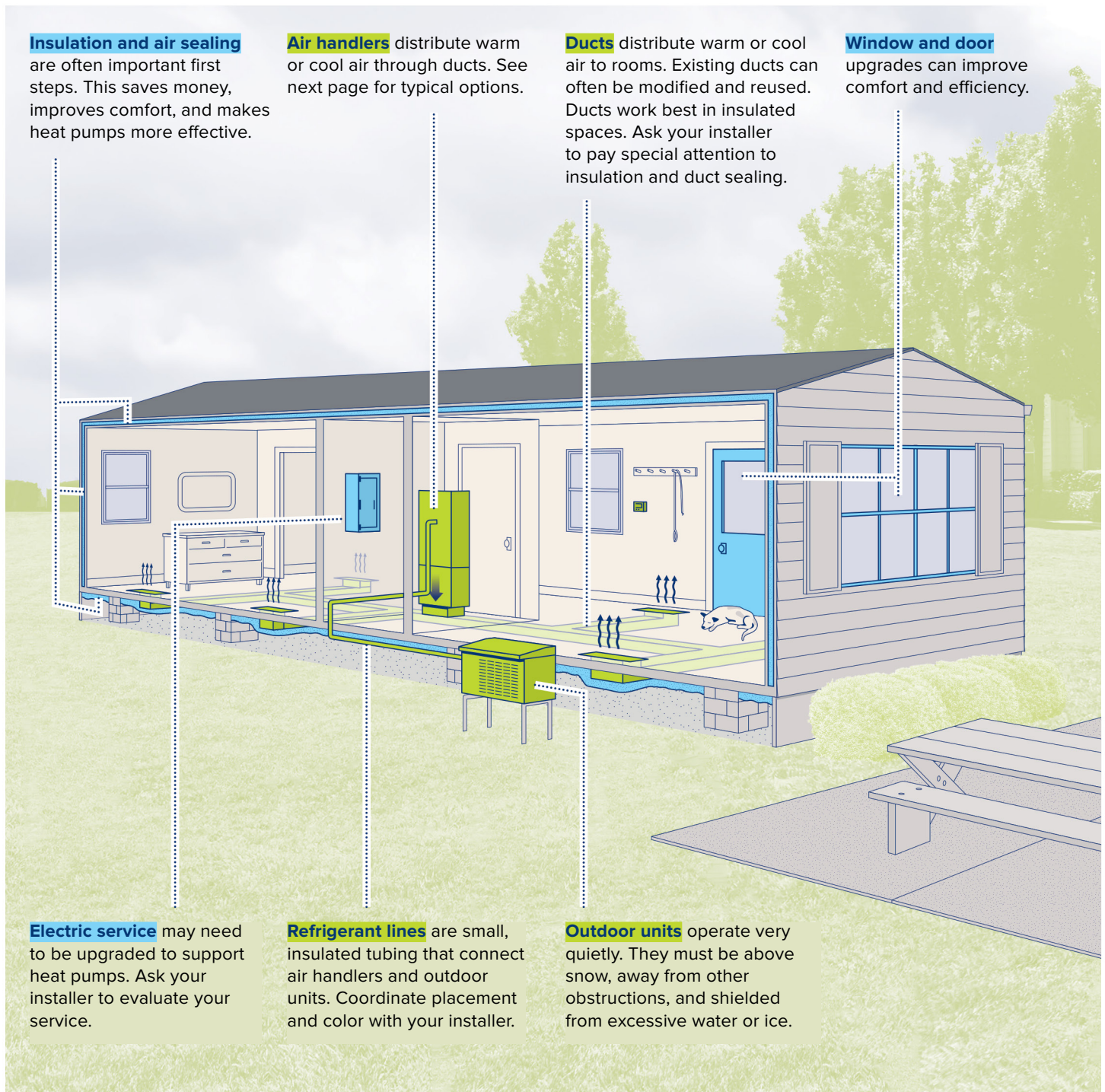


Ducted Heat Pump for a Manufactured or Mobile Home

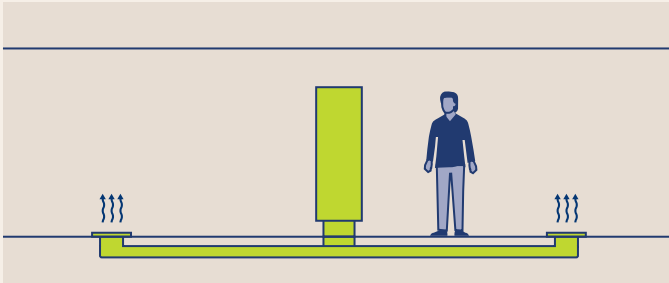
Heat pumps use electricity to provide clean, efficient heating and cooling.

- **Proven technology** heats and cools homes year-round across New York State
- **One system** provides comfort in both summer and winter
- **Healthy and safe** with no fuels, carbon monoxide, or window air conditioners
- **Affordable** with rebates, financing options, and low operating costs
- **Clean and green** with reduced greenhouse gas emissions
- **Versatile** solution for new or existing homes



Features

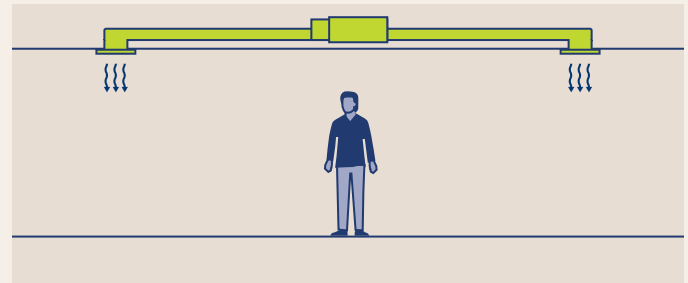
- Heating and cooling distributed throughout the home with new or existing ducts
- No wall-mounted indoor units
- Quiet and efficient operation
- Eliminate window air conditioners



Conventional air handlers move air through larger ducts. They are often located in basements, attics, or utility closets. They can be installed to distribute air upwards, downwards, or sideways to fit within your home.

Air Handler Options

Air handler equipment moves warm or cool air through ducts. Your installer can guide you to the best options based on heating and cooling needs, existing systems, and home configuration.



Compact ducted air handlers usually serve smaller areas such as one to three rooms. Their slim profile means they often fit in dropped ceilings, but leaving access for maintenance is important.

Ask Your Installer

- Will proper heating and cooling get to each space?
Ask for room-by-room heating and cooling calculations.
- Are my ducts big enough for a heat pump? What modifications are needed?
- Can heat pumps sufficiently heat my home or is an additional system needed?
- What are my options for locating each outdoor unit?
- How long will installation take? Where and when will you need access?
- How do I operate my system for optimal comfort and efficiency?
- What maintenance is required? How often should I clean or change air filters? Is annual service needed?
- What is the expected lifespan and warranty?

Cost Considerations

Installation Cost

- Check with NYSERDA, your electric company, and installer for incentives and financing options as larger incentives may be available for eligible customers
- If your home has ducts that can be reused, installation costs will be lower
- Cost varies with region, heat pump size, manufacturer, installation complexity, and installer experience

Operating Cost

- Your overall heating costs will likely decrease if switching from oil, propane or electric baseboard
- If you previously heated with fuel, don't be surprised to see electric bills rise; however, gas, oil, or propane bills will drop or disappear
- Efficient homes (windows, doors, insulation, air sealing) have much lower operating costs



NYS Clean Heat